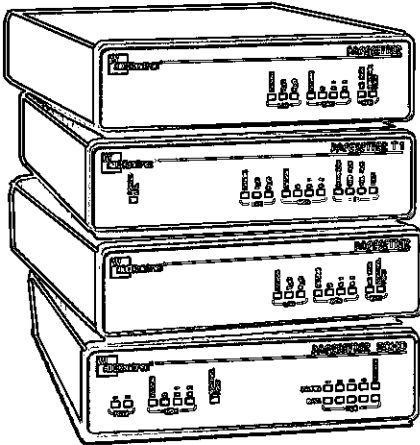


ADC Kentrox routers are your optimal choice for accessing the Internet and the corporate LAN.



- Frame Relay
- PPP
- X.25
- ISDN
- POTS
- 56k, T1/FT1, E1/FE1

All-In-One Feature Set

For value-added access to the Internet and the corporate LAN, turn to the PACESSETTER™ family of access routers. This family of routers includes unique features not found in other vendors' routers, or that are priced as extras.

All PACESSETTER routers include our unique IPshare feature, which facilitates cost-effective and secure access to Internet services. The routers support concurrent IP/IPX routing and bridging, and X.25 services, and have an embedded SNMP agent. PACESSETTER routers are standards-compliant and interoperable with major vendors' routers.

The Growing Family

The PACESSETTER SOHO ISDN access router with POTS capabilities is a cost-saving solution for telecommuters and small offices. Users can combine phone, fax and computer access onto a single ISDN line, saving line charges month after month. And an integrated 10Base-T hub saves the expense of an external device.

The PACESSETTER Pro Frame Relay and ISDN access router scales from analog modem speeds to ISDN, 56/64k, T1/FT1, E1/FE1 Frame Relay and leased line services, providing investment protection for growing networks. Users can upgrade their access method without swapping out expensive hardware.

To support remote offices that require high-speed access, the PACESSETTER T1 includes an integrated T1/FT1 DSU/CSU and ISDN NT-1. For 56/64k access, the PACESSETTER Pro is bundled with the D-SERV 56/64 DSU/CSU and a connecting cable at an economical price. And for offices wanting to combine voice and data traffic onto a single T1/FT1 line, the PACESSETTER Pro is bundled with the DataSMART T1 Single-Port Add/Drop DSU/CSU and connecting cable.

PACESSETTER™ Family

- Concurrent IP/IPX dynamic routing
- Spanning Tree Bridge for AppleTalk, DECnet
- Unique IPshare™ feature for cost-effective Internet access
- PAP, CHAP and RADIUS security and Firewall-style IP filters
- Stacker LZS compression (up to 4:1)
- Menu-based configuration, accessible via TELNET
- Field upgradable system software using TFTP
- Embedded SNMP agent and enterprise MIB
- Dynamic Host Configuration Protocol (DHCP) support

Concurrent Bridging and Routing

With concurrent routing and bridging, the PACESSETTER access router provides one economical solution for accessing the Internet and the corporate LAN. IP and IPX routing associates phone numbers with network addresses, so connections to the corporate network or your Internet Service Provider (ISP) are automatically made whenever the PACESSETTER detects traffic for a remote network.

Dedicated and dial line bridging with filters and a dial directory simplify operation and provide connectivity to users of AppleTalk, Windows and other network protocols.

Transaction-based Applications

The ISDN D channel that is normally used for call signalling can also carry X.25 data packets. Because there is no call setup time and very low data charges, this capability is ideal for transaction-based applications, such as credit card verification, automatic teller machines, and security alarm monitoring.

Save Money – Monthly

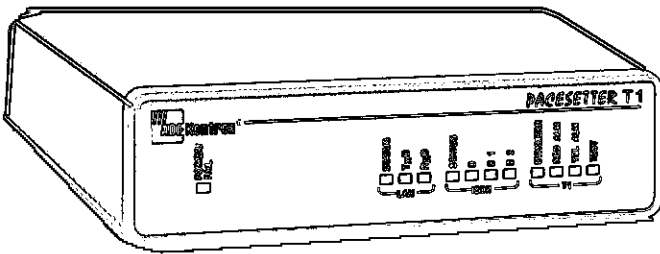
The IPshare feature – unique to the PACESSETTER family of routers – lets multiple users on a LAN share an Internet Service Provider *n*-user account. (The value *n* is a subscription option that determines the number of IP addresses assigned to the LAN.)

With IPshare, re-configuration of LAN workstation IP addresses is not required. When a PC on the LAN initiates a call to the ISP, the PACESSETTER dynamically accepts an IP address from the ISP for temporary use by the call originator. The PACESSETTER also determines how many additional users can multiplex data onto the call, and assigns their temporary IP address.

IPshare is ideal for small sites who want to access the Internet. The customer can start with a single-user account, shared among a few workstations. When access needs increase, the user can upgrade the account to support additional IP addresses, or to support the entire LAN. Upgrades can be accomplished without purchasing new hardware and without reconfiguration of workstation IP addresses.

IPshare helps the ISP control the assignment of scarce IP addresses. IPshare also protects the customer's LAN resources by shielding the LAN IP address space from unauthorized users.

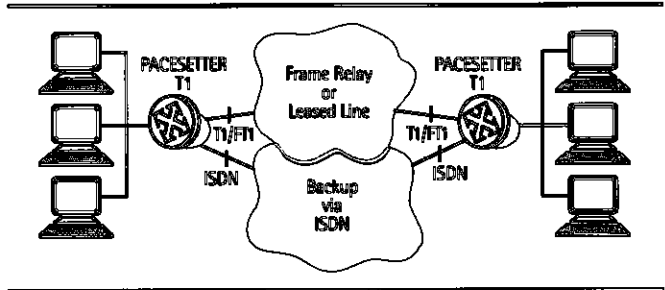
PACESETTER™ T1



- Integrated DSU/CSU for T1/FT1 connectivity
- Integrated ISDN NT-1 for backup or concurrent connections
- Concurrent IP/IPX dynamic routing and bridging
- Simultaneous ISDN and Frame Relay/PPP connections to multiple destinations
- Unique IPshare™ feature for lower-cost Internet access
- Comprehensive performance monitoring, control and diagnostics

Access Routers

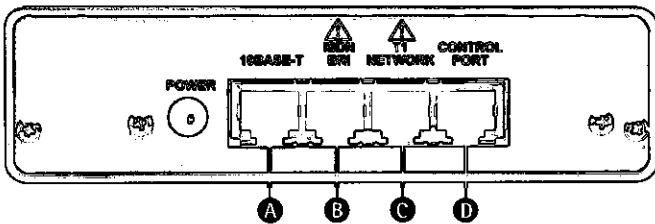
The PACESETTER T1 access router, with integrated T1/FT1 DSU/CSU and ISDN connectivity, offers economical access to the Internet and to corporate LANs. The PACESETTER T1 can be used for Frame Relay, PPP, X.25 and ISDN access. ISDN backup in the PACESETTER T1 allows a Frame Relay or leased PPP line to use ISDN for automatic recovery, if the primary line fails. The PACESETTER T1 can also use the T1 link for an enterprise office connection and the ISDN link for Internet access.



The PACESETTER T1 provides the same easy-to-use performance reports, alarms, and diagnostic control of T1/FT1 networks as available with our DataSMART DSU/CSUs.

The PACESETTER T1 is standards-compliant and is fully interoperable with all major vendors' routers and networking equipment.

Specifications & Ordering Guide



BACK PANEL & CABLE GUIDE

- A To LAN**
95007077* RJ45 Plug to RJ45 Plug, Cat. 3 UTP, 7 feet
95007078* RJ45 Plug to RJ45 Plug, Crossover, Cat. 3 UTP, 7 feet
- B To ISDN Network**
95007076* RJ11 Plug to RJ11 Plug, 7 feet
- C To T1 Network**
93015141* RJ48C Plug to RJ48C Plug
930xx142 RJ48C Plug to RJ48C Plug, Crossover
- D To Control Terminal**
93014241* EIA-561 (RJ45 Plug) Flat Modular Cable, Plug to Plug, 14 feet
78892 DB25P to EIA-561 (RJ45 Socket) Adapter
78909* DE9S to EIA-561 (RJ45 Socket) Adapter

* Included with unit.
P = Plug (male); S = Socket (female)

ORDERING INFORMATION

DESCRIPTION	MODEL NO.
PACESETTER T1 Access Router w/ integrated DSU and ISDN	76940
2-year warranty	

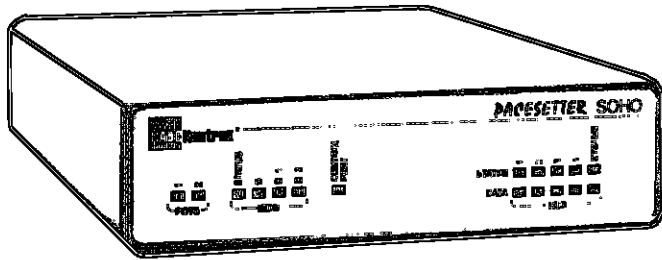
SPECIFICATIONS

Power	AC 100-120V (47-60Hz) 5W nom.
LAN Port	10Base-T
ISDN BRI Port	U Interface Integral NT-1
T1 Network Port	Line Rate T1 (1.544 Mbps)
Physical	Dimensions 5.57"W x 1.52"H x 7"D 14.1cm x 3.9cm x 17.8cm



PACESETTER™ SOHO

Access Routers

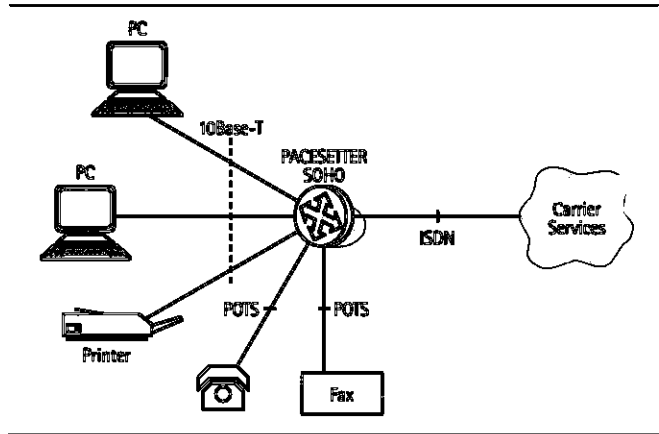


- Multi-link PPP protocol and BACP for 128k ISDN connections
- Two POTS ports for phone and fax over ISDN
- Integrated four-port 10Base-T hub
- Extends telco custom call features to the telephone
- Unique IPshare™ feature for economical Internet access
- D-channel X.25 for point-of-sale and home security applications

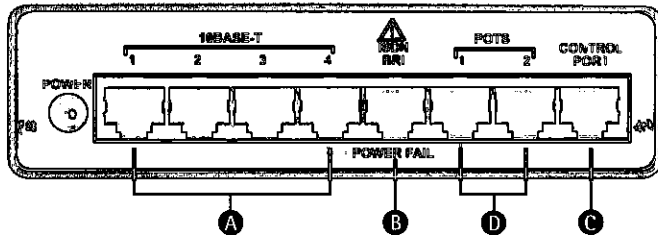
The PACESETTER™ SOHO is the complete access solution for telecommuters and small offices. This easy-to-use multifunctional device saves you money during network setup and on your monthly telecom bills. With two POTS ports, one ISDN port and four 10Base-T ports, the PACESETTER SOHO connects telephones, fax and computer equipment over a single ISDN line, saving extra line charges month after month.

Also included in the PACESETTER SOHO is an integrated 10Base-T hub. This LAN hub provides a small or home office with the ability to network up to four PCs without the added expense and space of an external device. For larger LANs, an external hub can still be attached to any of the Ethernet ports.

The PACESETTER SOHO is standards-compliant and fully interoperable with all major vendors' routers and networking equipment.



Specifications & Ordering Guide



SPECIFICATIONS

Power
100-130V, 60Hz, 5W nom.

LAN Ports
10Base-T (four)

ISDN BRI Port
U Interface: Integral NT-1
S Interface: European certification

POTS Ports
Mechanical: 2-wire RJ11 Socket

Physical
Dimensions: 5.57"W x 1.52"H x 7"D
14.1cm x 3.9cm x 17.8cm

BACK PANEL & CABLE GUIDE

- A To LAN**
95007077* RJ45 Plug to RJ45 Plug, Cat. 3 UTP, 7 feet
95007078 RJ45 Plug to RJ45 Plug, Crossover, Cat. 3 UTP, 7 feet
- B To Network**
95007076* RJ11 Plug to RJ11 Plug, 7 feet
- C To Control Terminal**
93014241* EIA-561 (RJ45 Plug) Flat Modular Cable, Plug to Plug, 14 feet
78892 DB25P to EIA-561 (RJ45 Socket) Adapter
78909* DE9S to EIA-561 (RJ45 Socket) Adapter

ORDERING INFORMATION

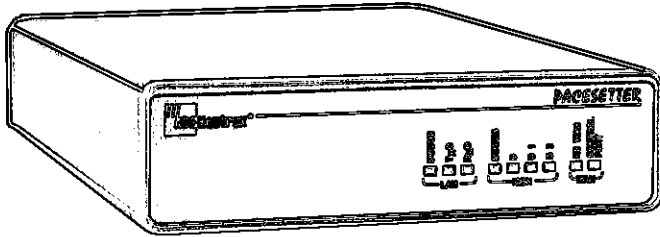
DESCRIPTION	MODEL NO.
PACESETTER SOHO ISDN Access Router with U Interface	76930
PACESETTER SOHO ISDN Access Router with S Interface	76935

2-year warranty



* Included with unit.
P = Plug (male); S = Socket (female)

PACESETTER™ Pro

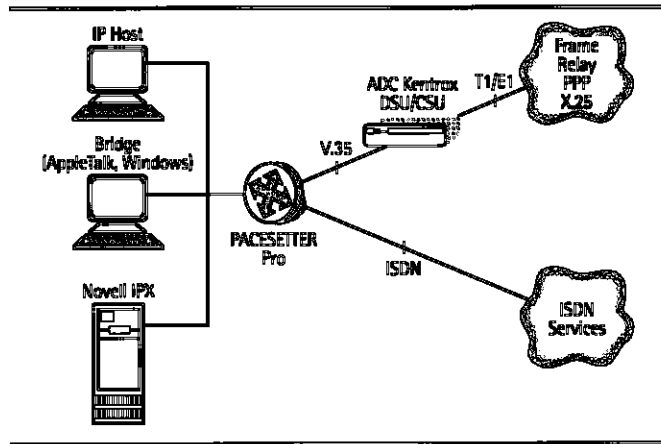


The PACESETTER® Pro router is the ideal solution for branch office access to the corporate LAN, intranets and the Internet, and for interconnecting LANs over Frame Relay. It provides one ISDN BRI port, a high-speed WAN port and a 10Base-T port.

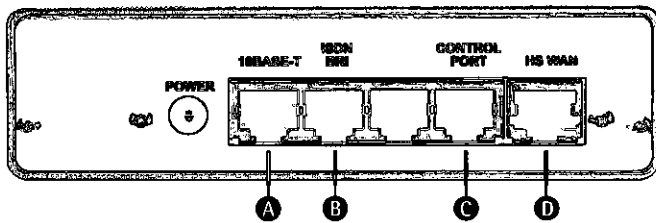
The versatility and scalability of the PACESETTER Pro lets users adapt easily and economically as their traffic increases or as service availability changes. It can function as a Frame Relay router with automatic ISDN backup or as an ISDN dial-on-demand router. The PACESETTER Pro can also be used for simultaneous Frame Relay and ISDN connections.

The PACESETTER Pro is standards-compliant and fully interoperable with all major vendors' routers and networking equipment.

- Scalable from modem speeds to ISDN, 56k, T1/FT1, E1/FE1 Frame Relay and leased line services
- Concurrent ISDN and Frame Relay operation
- Automatic ISDN dial backup for Frame Relay or PPP connection
- Multi-link PPP protocol and BACP for 128k ISDN connections
- Unique IPshare™ feature for cost-effective Internet access
- D-channel X.25 for point-of-sale and other transaction-based applications



Specifications & Ordering Guide



BACK PANEL & CABLE GUIDE

- A To LAN**
 95007077* RJ45 Plug to RJ45 Plug, Cat. 3 UTP, 7 feet
 95007078* RJ45 Plug to RJ45 Plug, Crossover, Cat. 3 UTP, 7 feet
- B To Network**
 95007076* RJ11 Plug to RJ11 Plug, 7 feet
- C To Control Terminal**
 93014241* EIA-561 (RJ45 Plug) Flat Modular Cable, Plug to Plug, 14 feet
 78892 DB25P to EIA-561 (RJ45 Socket) Adapter
 78909* DE9S to EIA-561 (RJ45 Socket) Adapter
- D To DSU or Modem**
 95015080 (V.35) 10-pin USOC Plug to MRAC34P, 15 feet
 95015081 (X.21) 10-pin USOC Plug to DA15P, 15 feet
 95006079 (RS-232) 10-pin USOC Plug to DB25P, 6 feet

* Included with unit.
 P = Plug (male); S = Socket (female)

ORDERING INFORMATION

DESCRIPTION	MODEL NO.
PACESETTER Pro ISDN/Frame Relay Access Router w/ U interface, V.35	76910
PACESETTER Pro ISDN/Frame Relay Access Router w/ S interface, X.21	76922
PACESETTER Pro + D-SERV 56/64 DSU Bundle	76959
PACESETTER Pro + DataSMART T1 Single-Port DSU Bundle	76949
PACESETTER Pro + DataSMART T1 Single-Port Add/Drop DSU Bundle	76948

2-year warranty

SPECIFICATIONS

Power	100-240V, 47-60Hz, 5W nom.
LAN Port	10Base-T
ISDN BRI Port	U Interface Integral NT-1 S Interface European Certification
HS WAN Port	RS232 (DTE) Sync or async to 115 kbps V.35 (DTE) Sync to 2.048 Mbps or X.21 (DTE) Sync to 2.048 Mbps
Physical	Dimensions 5.57"W x 1.52"H x 7"D 14.1cm x 3.9cm x 17.8cm



"When you're ready for dedicated high-speed access, the PACESETTER is more versatile and easier to configure than the Pipeline 130..."

Macworld, September 1996

Putting it all Together

The Reputation behind the Name

With ADC Kentrox, you can be sure you're getting the best in performance, reliability and product safety. We've earned a reputation for superior quality, reliability, service and support.

AROUND THE CLOCK

1 - 800 - 733 - 5511

CUSTOMER SERVICE

ADC Kentrox—Your Strategic Partner

At ADC Kentrox, customer support begins before we design the product. Since 1967 we have been known for giving you the quality and personal service you need, whenever you need it.

First, we listen to you to understand your requirements. Then we design products to meet those needs. We conduct evaluation and reliability studies on each product before it's released to manufacturing.

Our focus on manufacturing quality is evidenced in our ISO 9001 certification — the most stringent and comprehensive rating under the ISO standards. And all future products and new releases of current products will be verified to the Year 2000 Conformance Criteria. Before we ship products, all are approved and certified by carriers for conformance to industry standards and interoperability with the public network.

At ADC Kentrox, we emphasize reliable, prompt and flexible service and support. Our goal is to provide the best customer service and technical support in the industry — the ultimate support!

Customer Service

It is our goal to provide the 'best of class' customer service and technical support in the industry.

As a customer you will have a specific service representative who will assist you. If that person is unavailable, a designated back-up representative is prepared to help with your questions. For information on products, pricing, or delivery dates, just call your customer service representative.

Applications Support

If you have specific application or network configuration questions, don't hesitate to call our Applications Support group. They can help you with your network planning and implementation and decide which ADC Kentrox network access solution best fits your individual needs.

Technical Support

Our technical support staff is fully trained to answer a broad range of questions relating to not only our newest products, but any ADC Kentrox product you're likely to have installed. They are available for emergencies 24 hours a day, 7 days a week.

These technical specialists will help you troubleshoot your problem and they'll work with other vendors and your carrier, when appropriate, to help solve your technical problems.

Warranty Service and Systems Level Agreements

ADC Kentrox products are warranted to be free of defects in material and workmanship, when given proper installation and maintenance. All our 56k, T1 and E1 DSUs and CSUs carry a 5-year warranty. A 2-year warranty covers all other ADC Kentrox network access products.

In addition to our world-class telephone support, we have expanded your options to include system-level Support Agreements designed for our AAC-3 ATM Access Concentrator or the MagnumPlus Broadband Access Multiplexer. Our extended support offerings include:

Shared Service Agreement. With the Shared Service Agreement, you will be able to utilize your own resources, while relying on the expertise of ADC Kentrox Technical Support Engineers. You'll get cost-effective support that includes call escalation, complex problem diagnosis and repair services. (limited availability, call the factory for details)

On-site Support Agreement. This agreement is our most comprehensive support program available, with extended-hour access and same day or next-day on-site service. (limited availability, call the factory for details)

To obtain additional information on our on-line support, our systems-level installation program, return and repair policies, and selecting the best warranty agreement for your needs, call our Customer Service team.

For More Information

Product Training

ADC Kentrox offers a variety of training courses on our broadband access products. Available at our Portland, Oregon headquarters or at the customer site, these courses combine informative lectures and demonstrations with hands-on applications. Participants will learn how to install, configure, and troubleshoot products using live equipment. Combined with our in-house technical support, these courses are a smart way to avoid costly problems down the line. Visit our Web site, www.kentrox.com, for class schedules and registration information.

For detailed information and specifications on any of the products listed in this catalog, please complete the form on page 71 and fax or mail it today. Or simply call **1-800-232-5879**.

	PHONE	WEB/E-MAIL
Customer Service	1-800-733-5511 (503) 643-1681	info@kentrox.com
Literature Hotline	1-800-232-5879	www.kentrox.com
Pre-sales Support	1-800-733-5511 (503) 643-1681	info@kentrox.com
Technical Support	1-800-733-5511	support@kentrox.com
Training	1-800-733-5511 (x6322)	training@kentrox.com
Contracts Administration	1-800-733-5511 (503) 643-1681	

End-to-End Network Solutions from ADC

As people seek more effective ways to convey and use information, they are demanding better, faster and more diversified services from both public and private communication networks. To better serve these end users, ADC Telecommunications and its subsidiaries are working in collaboration with customers to change the way information is managed and transmitted. With expertise in fiber optics, video, local area network (LAN), broadband DSL and cellular technologies, ADC provides comprehensive end-to-end networking solutions for telecommunications, cable television, cellular and enterprise networks.

From the central office, through the outside plant and to the customer premises, ADC Telecommunications and its subsidiaries are continuously developing innovative new products that will enable all types of services — from POTS to video, data and even simultaneous data/voice/video transmission — to be delivered over a single integrated network.



NASDAQ: ADCT

BUSINESS BROADBAND GROUP

ADC Kentrox
Network Access

ADC Telecommunications Network Services
HiCap, SONET & ATM Transmission

RESIDENTIAL BROADBAND GROUP

ADC Broadband Communications
Analog, Digital Video Fiber Transport Residential Broadband Transport

ADC ITS Corporation
Wireless Broadband Transport

BROADBAND CONNECTIVITY GROUP

ADC Telecommunications Copper
Copper Connectivity Products

ADC Solitra
Wireless Base Station Subsystems

ADC Telecommunications Fiber
Fiber Connectivity Products

ADC AOFR
Fiber Optic Couplers and Splitters

SYSTEMS INTEGRATION GROUP

ADC Systems Integration
Global End-to-End System Integrator

ADC DaTel
Systems Integration Services

ADC Apex
Systems Integration Software

WIRELESS SYSTEMS GROUP

ADC Metrica
Network Management Database

ADC Mobile Systems
Mobile Base Stations & RF Distribution Systems

ADC Wireless Microsystems
Linear Power Amplifiers & RF Subsystems

1 - 8 0 0 - 2 3 2 - 5 8 7 9

Regulatory Mark Legend



Underwriters Laboratory and a Nationally Recognized Testing Laboratory *U.S. product safety*



Industry Canada



Canadian Standard Association



Bundesamt für Zulassung in der Telekommunikation *Telecom Approvals Agency, German Notified Body*



Product Safety Approvals Agency, German and European Standards *EN*



British Approval Board for the Telecommunication *UK Notified Body*



Community European *Conformance with European direction*



European Standard



A Nationally Recognized Testing Laboratory *U.S. product safety*



Federal Communications Commission



Pruf und Zertifierungsinstitut *Germany*



Bellcore Recommended Tests for Carrier Central Office



Austel Australian Telecommunications Authority